

# Upper Penitencia Creek Trail Connector Fact Sheet

## History

VTA in collaboration with the City of San Jose conducted a comprehensive access study for the Berryessa BART Station in 2010. The results of the study called for bicycle and pedestrian facilities and connections to be added to existing city roadways adjacent to the station area. Provisions were also made to enable a connection to a future Upper Penitencia Creek (UPC) trail within the UPC corridor. Berryessa community members recently requested the trail segment be constructed in conjunction with the BART Silicon Valley project.

VTA and the City of San Jose received the highest ranking in the county for grant funding to construct the trail through the Berryessa Station area and install a signal on King Road. VTA will complete environmental clearance, design the trail, administer grant funds, and manage construction of the trail. The City of San Jose will provide a local match for the grant.

## Overview

Extending the existing Upper Penitencia five mile trail system will close an important gap in the trail and provide a safe crossing for bicyclists and pedestrians across King Road. The proposed trail along the newly restored Upper Penitencia Creek will connect with both the Berryessa BART Station and proposed San Jose Flea Market development site. Future improvements to the nearby Coyote Creek trail system will integrate with the trail connector further improving the regional trail network.

The trail connector will be complimented by the following planned enhancements at the Berryessa BART Station: indoor bicycle storage room, dedicated bicycle and pedestrian pathways and a new VTA transit center with Express Bus service to downtown San Jose.

### Planned Trail Improvements

- Installation of new traffic signal on King Road
- Decorative trailhead gateways
- 1/8th mile shared use trail connection
- Interpretive displays and trail landscaping
- Increased access to planned Berryessa BART Station

## Partnerships

VTA, in partnership with the City of San Jose's Department of Transportation and Parks and Recreation, and the Santa Clara County Parks, has a common goal of improving county-wide mobility and enhancing safety for bicyclists and pedestrians.

### Preliminary Cost and Schedule

- Estimated project cost approximately \$2.5 million
- Trail opening to coincide with BART Silicon Valley passenger service, 2018
- Environmental clearance and final design, 2014
- Construction, 2015–2016



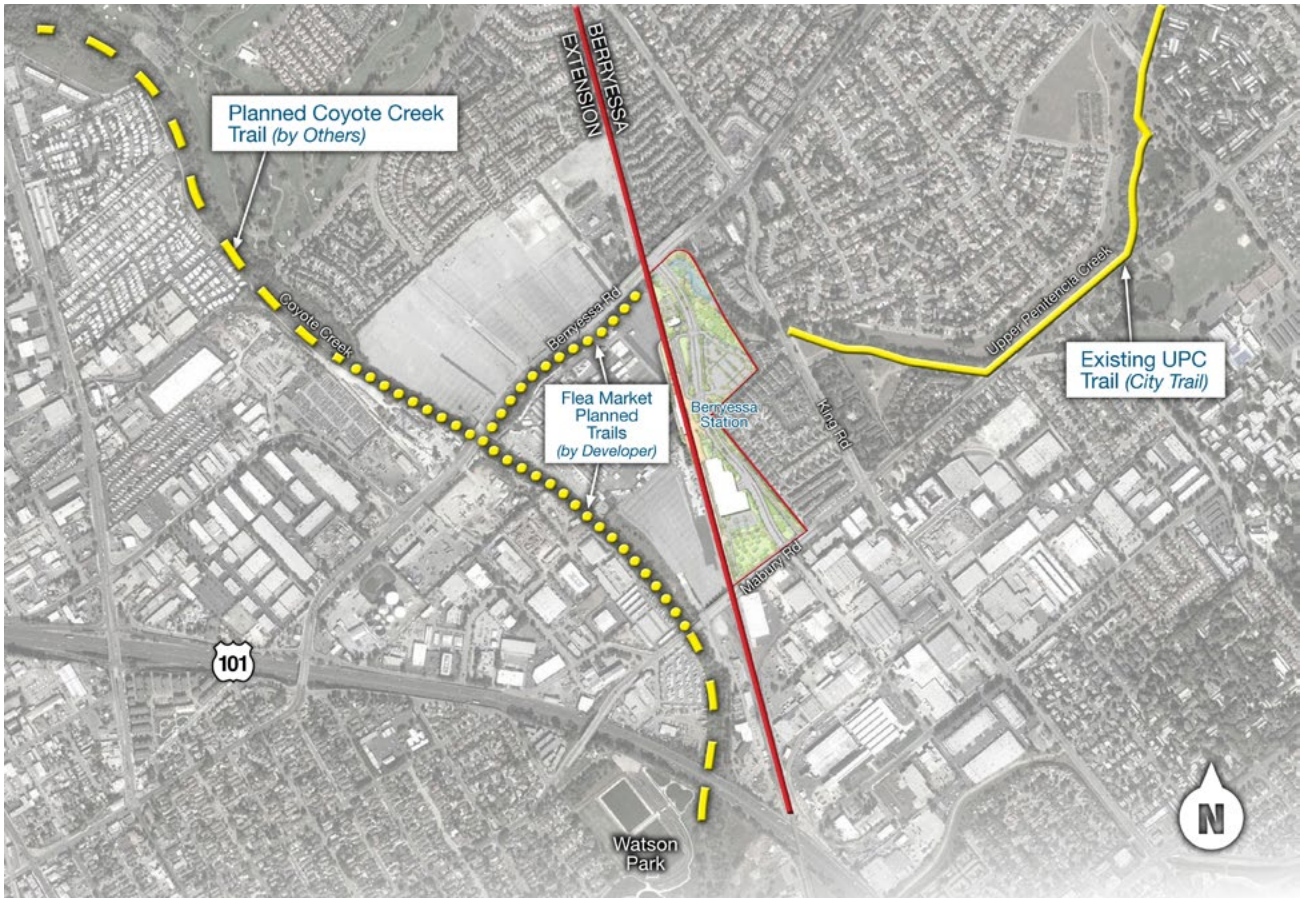
*The Upper Penitencia Creek Trail Connector will provide direct access to the Berryessa BART Station indoor bicycle storage room, shown here under the elevated guideway adjacent to the north station entrance.*



*In addition to station access from King Road via the proposed Upper Penitencia Creek Trail Connector, bicyclists and pedestrians will have dedicated bike-only and pedestrian-only paths from Mabury Road, shown here looking north.*

## How to Reach Us

If you have questions, please contact BART Silicon Valley Community Outreach at (408) 934-2662, (TTY) for hearing-impaired at (408) 321-2330. You may also sign up for project updates at [www.vta.org/bart](http://www.vta.org/bart) or email us at [vtbart@vta.org](mailto:vtbart@vta.org).



Berryessa BART Station Area Regional Trail



Draft Alignment Map