

3 Capitol Expressway Light Rail to Eastridge

Estimated Cost: \$520.8 million*

Secured Funding: \$322.8 million

Year of Completion: Phase 1: 2015, Phase 2: 2023

Project Description:

This project will transform Capitol Expressway into a multi-modal boulevard offering bus and light rail transit, and safe pedestrian pathways with connections to the regional trail system.

Phase I includes pedestrian and bus improvements along Capitol Expressway to improve pedestrian access by adding sidewalks, street lights, and landscaping from Capitol Avenue to Quimby Road. This phase also includes reconstruction of the Eastridge Transit Center.

Phase II will extend light rail from Alum Rock Station to the Eastridge Transit Center with elevated structures at Capitol Avenue, Story Road, and Tully Road. The Eastridge extension will include LRT station at Story Road (aerial) and Eastridge (at-grade).

Project Status:

Phase I - The pedestrian improvements were completed in the spring of 2013. Eastridge Transit Center was completed in May 2015.

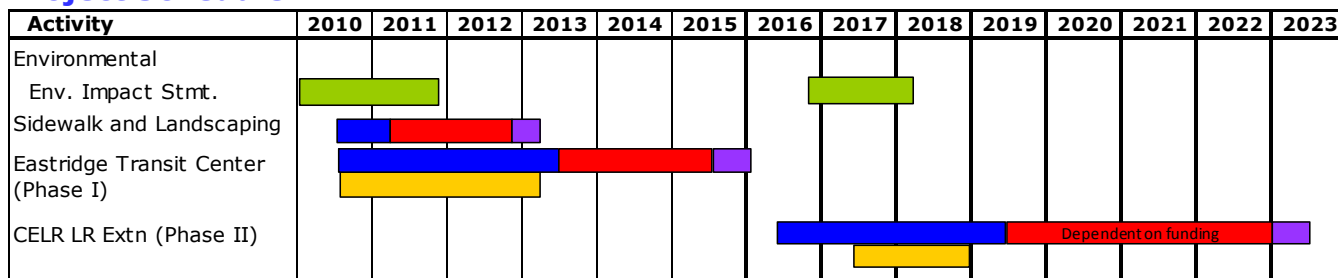
Phase II -In June 2016, VTA Board of Directors approved funding to complete design, acquire right of way and relocate utilities. Request for Proposal for final design was issued in November 2016 and was awarded to BKF Engineers in May 2017. Final design and utility coordination with PG&E began in June 2017. Revised draft supplemental Environmental Impact Statement was submitted to FTA. Record of decision is expected in early 2018. Right of Way Acquisition is expected to be completed by 2018 and Utility Relocation is expected to be completed by mid 2019. Construction is expected to begin in early 2019. Construction phase is dependent on securing funding.



Project Cost:

Project	Total Estimate	Total Estimated Cost (in \$M)			Incurred through Jun 2017 (in \$M)			Status
		Others	Measure A	TBD	Others	Measure A	Total	
DTEV Planning & Conceptual Engg	\$ 11.1	\$ 5.7	\$ 5.3	\$ -	\$ 5.7	\$ 5.3	\$ 11.1	Completed
DTEV Environmental & 90% CELR	\$ 54.5	\$ 0.2	\$ 54.4	\$ -	\$ 0.2	\$ 54.4	\$ 54.5	Completed
CELR Phase I - Pedestrian Improvements	\$ 19.0	\$ 16.0	\$ 3.0	\$ -	\$ 16.0	\$ 3.0	\$ 19.0	Completed
CELR Phase I - Eastridge Transit Center	\$ 59.3	\$ 26.9	\$ 32.4	\$ -	\$ 26.9	\$ 31.8	\$ 58.6	Closeout; Underrun projected
CELR Phase II - LRT to Eastridge	\$ 376.9	\$ 246.9	\$ 130.0	\$ -	\$ 0.5	\$ 0.5	\$ 0.5	Ongoing
Total	\$ 520.8	\$ 48.8	\$ 342.0	\$ 130.0	\$ 48.8	\$ 95.0	\$ 143.8	

Project Schedule:



* P-0375, P-0476, P-0743, P-0744, P-0787